

Isabelo sezimali saseGauteng 2005/2006

Sethula isabelo sezimali sika 2005/06 sikaHulumeni wesiFundazwe saseGauteng ngonyaka esigubha ngawo umkhosi weminyaka engu 50 yesiVumelwano seNkululeko.

Njengokuba sigubha lomkhosi waminyaka yonke, sithe ngalesisabelo sezimali, saba imali ngendlela ezoqhubela phambili kabanzi izinjongo zesiVumelwano seNkululeko futhi sijulise izinzuzo esizitholile kuze kube manje ekwandiseni ukufinyelela kwimpilo enhle nengcono.

Ukusukela ngo 1994, sibe nempumelelo ekutheni sakhe isisekelo esiqinile esingakwazi ukuthi sisusele kuso intuthuko yezinjongo zethu zesu-mgomo lethu. Imiphumela yemisebenzi yethu isiqala ukubonakala ngamandla ngokufinyelela kwabaningi kwizinsizakalo zezehlalakahle, ngokuphucuka kokwethulwa kwezinsizakalo kanye nangokudlondlobala kwezomnotho. Sinempumelelo ekwakheni umphakathi ongcono esisekelweni esingokulingana nesizotha kubo bonke.

Okuphezulu eqhulwini ngobumqoka kuhulumeni ophetheyo manjena yilokhu:

- Ukuphumelelisa ukukhula komnotho kanye nokwakheka kwamathuba emisebenzi.
- Ukulwa nobubha kanye nokwakha umphakathi ophephile, ovikelekile futhi nosimeme
- Ukuthuthukisa impilo enhle, amakhono nokukhiqiza kwezomnotho kubantu
- Ukujulisa umgomo wentando yeningi kanye nokwakiwa kwesizwe, kanye nokuphumelelisa amalungelo esintu kubantu bethu
- Ukwakha uhulumeni onempumelelo nonakekelayo

Lesi sabelo sezimali sicacisa ukuthi kuzohlangekshazanwa kanjani namaphuzu obumqoka ngezinhlelo nemikhankaso enhlobonhlobo kaHulumeni wesiFundazwe saseGauteng kuminyaka yezimali emithathu ezayo.

I-su-mgomo ledlondlobalo neNtuthuko yaseGauteng lihambisana ngqo nokuzinikela kwethu ekubekeni induku ebandla emkhankasweni kazwelonke wokunciphisa ububha nokungasebenzi ngesigamu ngokuthi kukhuliswe umnotho ngendlela esimeme. Sizobuye futhi sigxile kuzinselelo zengxenywe yesibili yomnotho wethu, okuyingxenywe ebonakala ngamazinga aphezulu okusweleka kwemisebenzi, ukungabi namakhono, kanye nokuba phansi kwezinga lentuthuko jikelele.

Ezenhlalakahle zenza u 81% wezindleko zesabelo sezimali sesisonke, lokhu kuveza ngokusobala ukuzinikela kwethu ekwethuleni izinsizakalo zezehlalakahle eziseqophelweni kuzona zonke izakhamuzi zaseGauteng. Sibuye saba imali ezobhekela imikhankaso yengqalasizinda kanye nemikhankaso esungulelwe ukufukula umnotho, ukwakha amathuba emisebenzi kanye nokulwa nobubha kusifundazwe.

Engethamba ukuthi nizokuwuthola uwusizo kakhulu lombhalo egalelweni lokuba niqonde futhi nihlaziye kalula isabelo sezimali sasesiFundazweni saseGauteng sika 2005.



Paul Mashatile

Ilunga loMkhandlu wesiFunda saseGauteng kwezeziMali nezoMnotho

Kungani sidinga isabelo sezimali?

Isabelo sezimali yisu eliveza ukuthi zizosetshenziswa kanjani izimali ezikhona. Isabelo sisivumela ukuba sihlele ukusetshenziswa kwezimali ngendlela ezokwenza sifeze izinhloso esizibekele zona.

Sinesibopho sokugcina umphakathi wazisiwe ngokwenziwa nguhulumeni nokuthi izimali zisetshenziswa kanjani.

Ngokwethula isabelo sezimali siletha futhi isu lokusetshenziswa kwezimali okungakalwa futhi kuhlolwe ngalo ukwenza kukahulumeni.

Lelibhukwana lichaza isabelo sezimali saseGauteng sonyaka wezimali oqala mhlaka 1 April 2005 ugcine mhlaka 31 March 2006.

Ziyini izidingongqangi zesiFundazwe, izimfuneko ezimqoka kanye nezinhlelo ezamukelwe ngu Mkhandlu ophethe kaHulumeni wesifundazwe saseGauteng?

■ Ukuphumelelisa ukukhula komnotho kanye nokwakheka kwamathuba emisebenzi

Izinyathelo nezinhlelo ezimqoka

- Ukusiza, ukuxhasa nokufaka imali:
- Kwizingqalasisinda ezibalulekile zomnotho ezibandakanya iGautrain Rapid Rail Link, i-Innovation Hub kanye neJohannesburg International Airport Industrial Park
- Kwimikhakha yezomnotho emumatha abasebenzi abaningi nasekwandiseni kwimikhakha ekhulisa ithuthukise abasebenzi
- Kwizindawo zezwe ezikhethiwe ukuze kuqhubekile phambili ukukhuliswa komnotho okusabalele nokukhuliswa komnotho wesifunda
- Ekugqamiseni isifunda saseGauteng njengendawo ekhethekile yokutshala izimali, yokuhanjelwa yizivakashi, yamabhizinisi neyikhaya lemidlalo yokuncintisana
- Ekwandiseni ukwakheka komnotho ngokuxhasa ukukhuliswa komnotho wabampisholo (BEE) nentuthuko yosomabhizinisi abafufusayo (SMME) okumbandakanya ukwakhiwa kwamathuba emisebenzi kubantu abazisebenzayo (self employment) nasekubambeni iqhaza kuxhaso ngezimali olubhekiswe kubantu besifazane kanye netsha
- Ekubambeni iqhaza elikhulu njengabathengi bempahla nezinsiza
- Ekusebenzisweni ngokugcwele komhlaba wezolimo nasekuxhaseni abalimi abampisholo.
- Ekwenzeni isifunda saseGauteng sibe yindawo ebumbene futhi nesisezingeni eliphezulu lokuncintisana nezwe lonke

■ Ukulwa nobubha kanye nokwakha umphakathi onamandla nosimeme

Izinyathelo nezinhlelo ezimqoka

- Ukwethulwa kohlelo-jikelele nolubumbene lwengqalasisinda ukuze kuqinisekiswa ukwakhiwa kwezakhiwo zomphakathi. Loluhlelo luzoqinisekisa ukuthi:
- Izindawo ezisezintsha zokuhlala abantu zinazo zonke izidingo eziyofunwa ngumphakathi ngaphambi noma ngokushesha okukhulu emva kokungena kwabantu ezindlini ezintsha
- Izakhiwo zomphakathi zingaguqukiswa uma umphakathi uguquka. Isibonelo, izikole kwimiphakathi esikhulile zingaphendulwa zibe yizindawo yokuhlangukela umphakathi.
- Uhulumeni angakha izakhiwo kwizikhala ezingenazo izakhiwo noma kwizindawo

Ziyini izidingongqangi zesiFundazwe, izimfuneko ezimqoka kanye nezinhlelo ezamukelwe ngu Mkhandlu ophethe kaHulumeni wesifundazwe saseGauteng?

- ezenzelwe ukuthuthwa kwabantu
- Amakontileka (contracts) anikwa osomabhizinisi bendawo abancane nabasafufusa nanokusetshenziswa ngokugcwele kwabasebenzi uma kwakhiwa noma kunakekelwa izakhiwo
- Izakhiwo zomphakathi ziyanakekelwa, zisimeme nokuthi zisetshenziswa ngokuphelele ngumphakathi
- Uhlelo olusabalele lweMisebenzi yoMphakathi (Expanded Public Works) luyasetshenziswa esifundeni saseGauteng, okumbandakanya ukuhlanganiswa kwezinhlelo ezivele zikhona zemisebenzi yomphakathi
- Wonke umphakathi uthola zonke izinhlelo eziletha ukweneliswa kwezidingo zabo, okumbandakanya ukutholakala kwamahala kwenani elithile lamanzi nogesi
- Ukwakhiwa kwezindlu ezinhlobonhlobo ezindaweni ezilungiswe kahle
- Ukwenziwa kwezindawo eziyimijondolo zibe kwisimo esiphephile nesilungele ukuhlala abantu ezindaweni ezilungiswe kahle
- Ukuvuselelwa kwendawo yokuhlala engasemadolobheni
- Ukugqamiswa nenqubekelo phambili yemizamo yokukhulisa umnotho wendawo
- Ukwenziwa nokusetshenziswa kwesu-mgomo elizosingatha ezokuphathwa kwezithuthi zomphakathi
- Ukwenziwa kwesimo esiphephile nempilo ehlanzekile yomphakathi
- Ukubambisana nemiphakathi kanye namaphoyisa ukuqinisekisa ukuphepha emigwageni, emakhaya, emisebenzini nasezikoleni, ikakhulukazi kwabesifazane nezingane
- Ukuba khona kokuphepha emigwaqeni yaseGauteng ngokuqashelwa kwezithuthi ngendlela efanele

■ Ukuthuthukisa impilo enhle, amakhono nokukhiqiza kwezomnotho kubantu

Izinyathelo nezinhlelo ezimqoka

- Ukukhuthaza ukudliwa kokudla okunomsoco nokuphila impilo enhle neyamkelekile.
- Izinhlelo ezivikelayo neziphilisayo ezizovikela ukugula nokufa
- Kuyoba nezihlelo ezinakekelayo nezakha izinga lempilo eliphezulu
- Ukuhlanganiswa kwezinhlelo zezinsizangqala zezempilo (primary health care services)
- Ukutshala izimali kwizingane ngokuphucula izinsiza eziqondene nokukhuliswa kwezingane
- Ukuhlanganiswa nokukhushulwa kwezinga lemfundo kwizikole zomphakathi
- Ukwakhiwa kwamakhono kubantu, ikakhulukazi kwintsha, ngokukhuphula izinga lemfundo noqoqosho olwengeziwe (further education and training) nokuqhutshelwa

Ziyini izidingongqangi zesiFundazwe, izimfuneko ezimqoka kanye nezinhlelo ezamukelwe ngu Mkhandlu ophethe kaHulumeni wesifundazwe saseGauteng?

kwezinhlelo zokufundisa ngomsebenzi (learnerships)

- Ukuqinisekisa ukufunda okuqhubekayo okumbandakanya ukukhushulwa kwezinga lemfundo noqoqosho lwabantu abadala (adult basic education and training)
- Ukuxhumanisa izimboni zemisebenzi, izikhungo zemfundo ephakeme, izikhungo zamakhono kanye nayo yonke imikhakha kaHulumeni ukuqinisekisa ukuqondana phakathi kwezidingo zemisebenzi nabantu abanamakhono aleyomisebenzi, ikakhulukazi leyomisebenzi edingekayo kumnotho osakhula

■ Ukujulisa umgomo wentando yeningi kanye nokwakhiwa kwesizwe, kanye nokuphumelelisa amalungelo esintu kubantu bethu

Izinyathelo nezinhlelo ezimqoka

- Ukuvikela ukuhlukumezeka komphakathi (social crime) nokulungisa izinsusa zobudlova nokuhlukunyezwa ikakhulu kwabesifazane kanye nezingane
- Ukuthuthukisa intsha ukwandisa amathuba entsha okufaka isandla kwezomnotho
- Ukwatha abesifazane ngezinhlelo zikahulumeni ezisusa zonke izinkinga ezinqabela abesifazane ukuthi nabo bafake isandla kwezomnotho nasemphakathini
- Ukusebenzisa izinhlelo zobuciko, amasiko, ezemidlalo kanye nezokungcebeleka ekwakheni isizwe kanye nobumbano nozwano
- Intuthuko yezemidlalo njengohlelo olubalulekile, hhayi ngenhloso yokwakha impilo enhle kuphela, kodwa nokwakha isizwe nentuthuko kwintsha
- Ukugqguzela ukubamba iqhaza komphakathi
- Ukuhlanganisa ukusebenza kwentando yeningi kuyo yonke imikhakha yokubusa

■ Ukwakha uhulumeni onempumelelo nonakekelayo

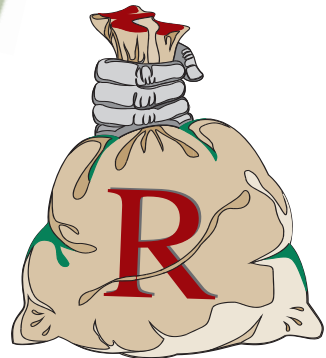
Izinyathelo nezinhlelo ezimqoka

- Ukuhlinzeka umphakathi ngezinsiza ezibumbene neziseqophelweni ezivela kuhulumeni onakekelayo
- Akubakhona kwabasebenzi bakahulumeni abenele ukusiza umphakathi
- Ukufinyelela komphakathi kalula kuhulumeni
 - Ngokwenza kutholakale ulwazi ngezinsiza zikahulumeni
 - Kukhushulwa ukuxhumana phakathi kukahulumeni nemiphakathi yonke
 - Uma kunezikhhalazo eziphuma kumphakathi uhulumeni azilalele azilungise
- Ukusetshenziswa kwezinhlelo zikahulumeni ngobuqotho ukwenelisa umphakathi
- Ukungamukeleki kwenkohlakalo nobukhonyovu kwimikhakha kahulumeni
- Kusetshenziswane futhi kuxhaswane nomasipala ukuletha izinguquko

Siyitholaphi imali yethu?



**Ukwabiwa okuLingene
kukaZwelonke kwamasheya nama-
Grants ahambisana nemiBandela
= R32,045 billion (95%)**



**ISIYONKE IMALI ENGENAYO
= R33,559 billion**



**Ezinye
izinkokhelo ezigunyazwe
umthetho
=R36,5 million**



**Imali eqoqwa nguhulumeni
wesiFundazwe sase
Gauteng
= R1,514 billion (5%)**

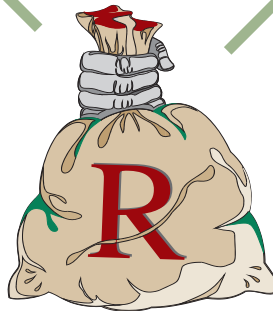
**Imali Engenayo masekususwe
eyezinkokhelo
=R33,523 billion**

Imithombo yemali engena kwisifundazwe



Izintela zokugembula nokubheja
 = R372,6 million
 (24,6%)

Izimali ezikhokhwa yiziguli
 = R167,3 million
 (11,1%)



IMALI ENGENA KWISIFUNDAZWE
 = R1,514 billion

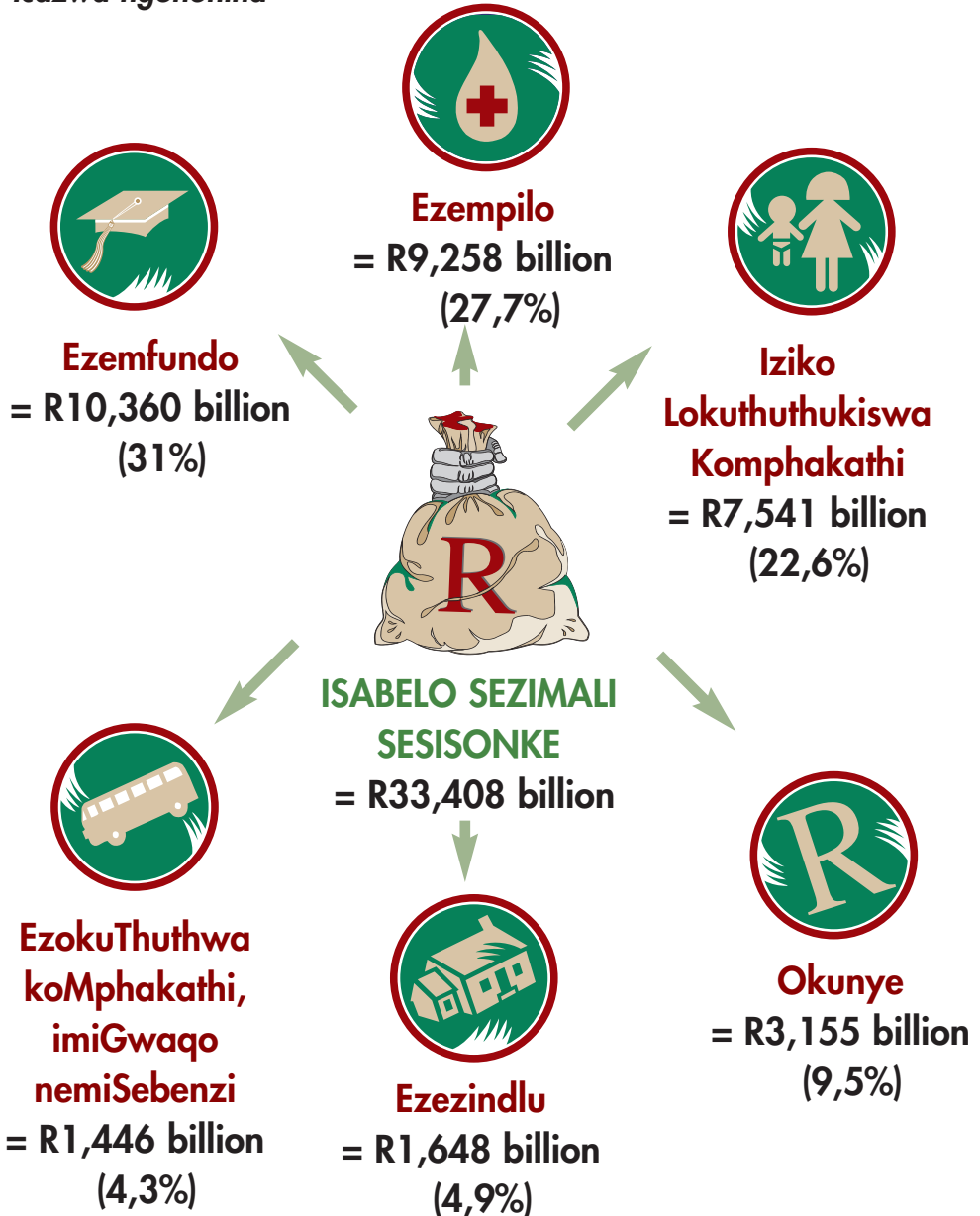


Amalayisensi ezimoto
 = R744,2 million
 (49,1%)

Eminye imithombo
 = R230,4 million
 (15,2%)

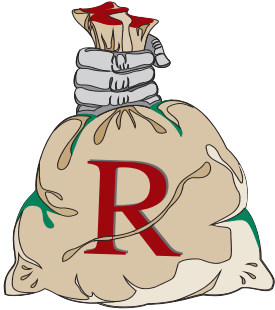
Siyisebenzisa **kanjani** imali yethu?

Icazwa ngononina



Siyisebenzisa **kanjani** imali yethu?

Ukucazwa ngezingxenywe zezomnotho



**ISABELO SEZIMALI
SESIONKE**
= R33,408 billion

Izinkokhelo eziqhubekayo
= R20,246 billion (60,6%)

**Izimali ezidluliselwa kwezinye
izindawo nemixhaso**
= R11,707 billion (35%)

**Ukukhokhelwa kweMpahla
okusetshenzwa ngayo**
= R1,455 billion (4,4%)

Ukuhlelwa kwezindleko ngokwahlukahlukana

**ISABELO SEZIMALI
SESIONKE**
= R33,408 billion

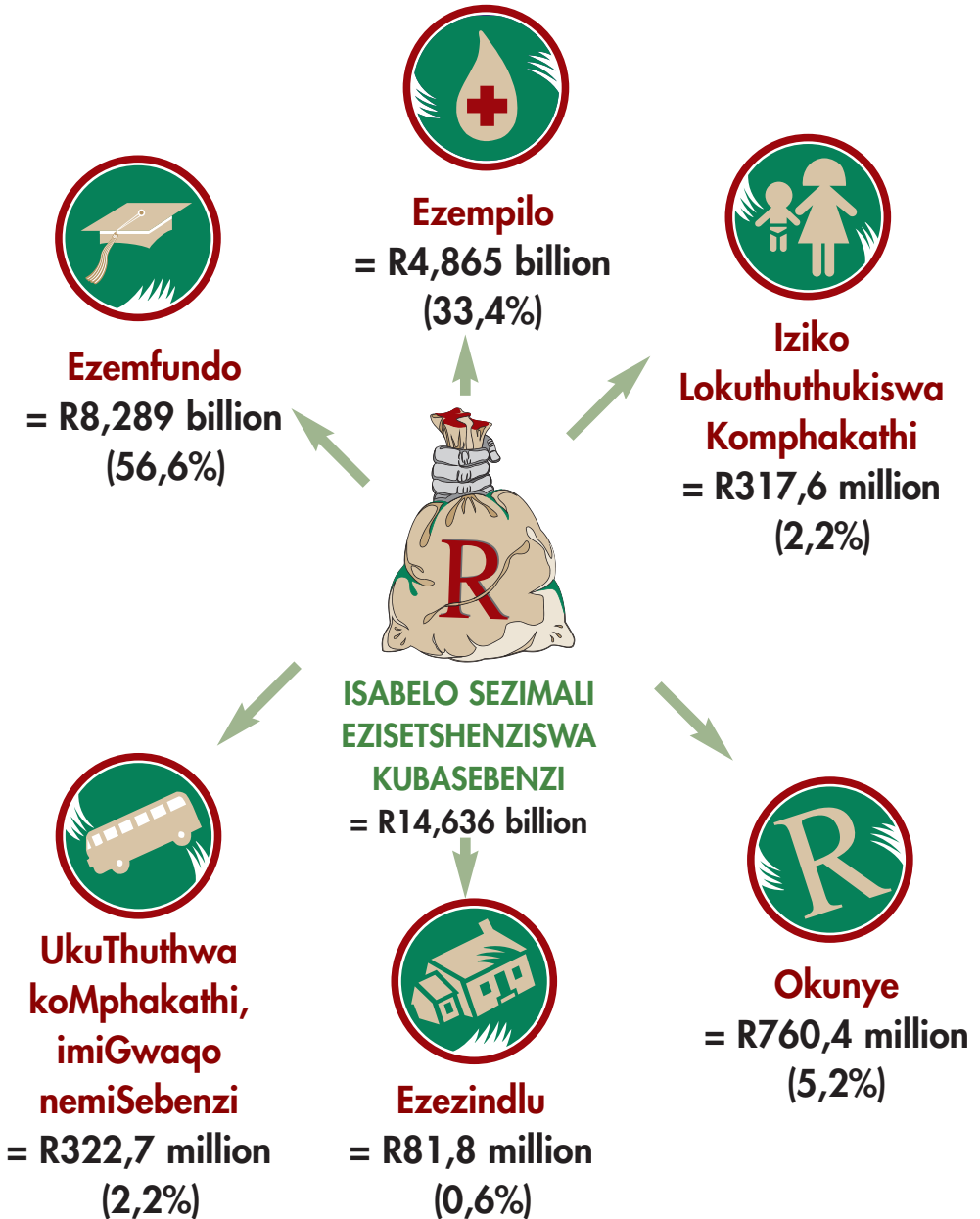
Ukuholelwa kwabasebenzi
= R14,636 billion (43,8%)

Izimpahla nezinsizakalo
= R5,574 billion (16,7%)

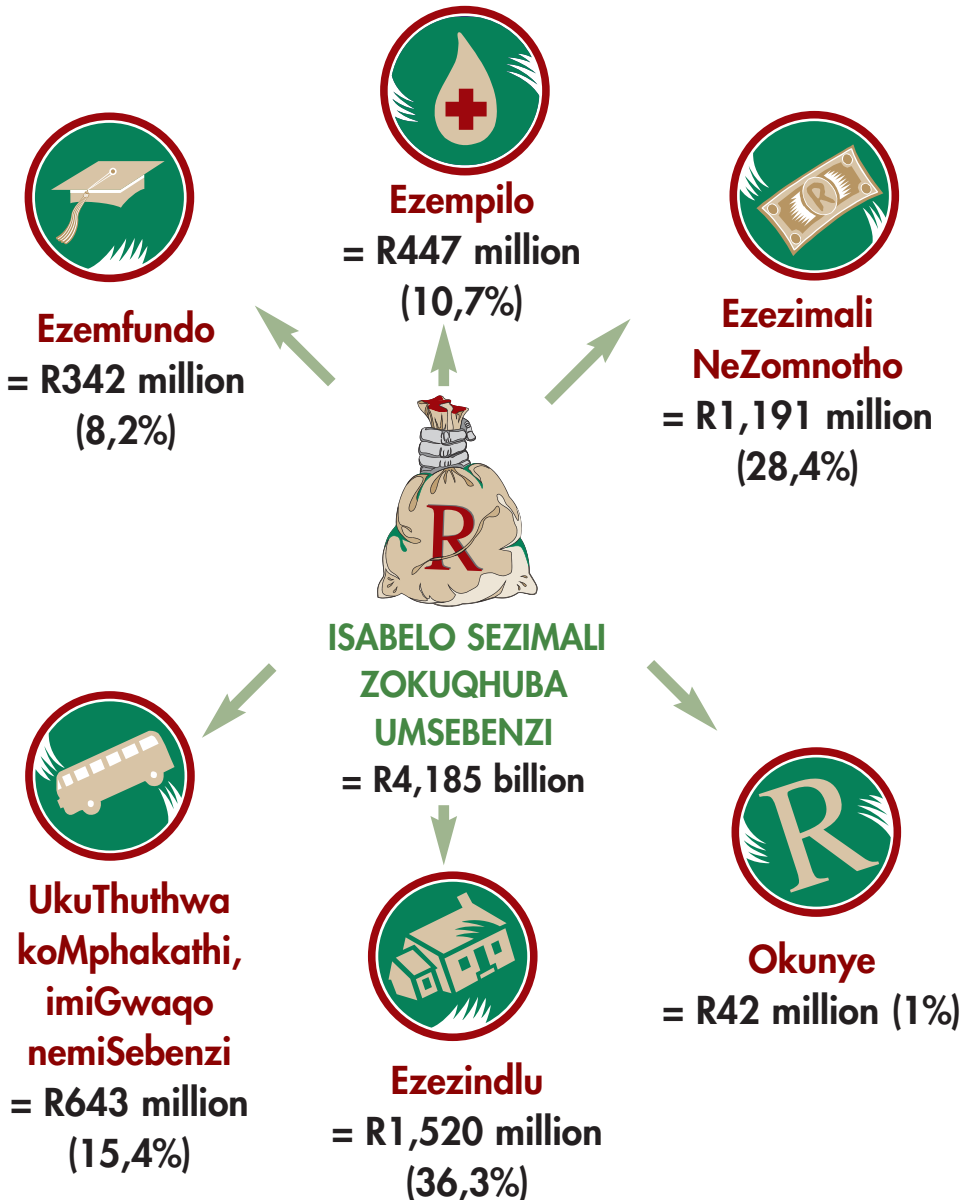
Izimali ezinikelwa kubantu
= R7,999 billion (23,9%)

**Okunye (kumbandakanya
inkokhelo yempahla yokuqhuba
umsebenzi) = R5,199 billion (15,6%)**

Ukusetshenziswa kwezimali kubasebenzi



Ngokufingqiwe Izimali zokuqhuba umsebenzi ngomnyango ngamunye



Imikhankaso eyisiPesheli

Isu-Mgomo leDlondlobalo neNtuthuko
= R250 million (15,1%)

GautengOnline
= R100 million (6%)

Ingqalasizinda
yobuchwepheshe bolwazi (IT)
kusifundazwe (E-Government)
= R48 million (2,9%)

Blue IQ
= R170, 3 million
(10,3%)

ISABELO SEZIMALI SESISONKE
= R1,656 billion

Gautrain
= R900 million (54,3%)

Alexandra
Renewal Project
= R168 million (10,2%)

Imikhankaso yezokuphepha emgwaqeni
= R20 million (1,2%)

Siwandise **kuphi** umthamo wokusetshenziswa kwezimali?

	Sichithe imali engakanani ngonyaka odlule 2004/05 billion	Sihlela ukuchitha imali engakanani kulonyaka 2005/06 billion	Sandise/sinciphise kangakanani %
Ezempilo	10,027	10,360	3%
Ezempilo	8,943	9,258	4%
Iziko Lokuthuthukiswa Komphakathi	6,439	7,541	17%
Ezemali nezoMnotho	1,179	1,285	43%
Ezezindlu	1,440	1,648	14%
Okunye	3,179	2,916	(18%)
SESIONKE	31,207	33,408	7%

